



90W (1/8 HP)

REVERSIBLE MOTORS Frame size 90mm sq. (3.54 in. sq.)

Single-Phase

LEAD WIRE TYPE

SPECIFICATIONS

CONTINUOUS DUTY, INSULATION CLASS A or E, 4POLES

Model	Output		Voltage (V)	Frequency (Hz)	Rated						Starting Torque			Capacitor (μ F)
	(HP)	(W)			Input (W)	Current (A)	Torque			Speed (rpm)	(kg-cm)	(N-m)	(oz-in)	
							(kg-cm)	(N-m)	(oz-in)					
L9R90□C	1/8	90	1 \varnothing 100	50	230	2.0	6.8	0.666	94.43	1300	6.7	0.657	93.04	35
60					2.3	5.5	0.539	76.38	1600	6.7	0.657	93.04		
L9R90□D	1/8	90	1 \varnothing 200	50	230	1.0	6.8	0.666	94.43	1300	6.7	0.657	93.04	9
60					1.2	5.5	0.539	76.38	1600	6.7	0.657	93.04		
L9R90□B	1/8	90	1 \varnothing 220	60	250	1.15	5.5	0.539	76.38	1600	8.2	0.804	113.87	8.5
L9R90□E	1/8	90	1 \varnothing 115	60	230	1.7	5.5	0.539	76.38	1600	6.5	0.637	90.27	20
L9R90□X	1/8	90	1 \varnothing 220~240	50	230	1.0	6.8	0.666	94.43	1300	7.6	0.745	105.54	8

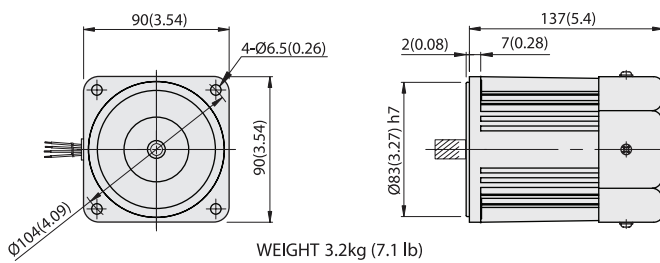
- * Model in grey screen represents the motors with THERMALLY PROTECTED according to UL regulation.
- * Model in dark grey screen represents the motors with THERMALLY PROTECTED according to CE regulation.
- * In case of some models certificated for export, the special cord like CE or UL is added after the existing model no. ex) L9160□XH-CE, L9160□EH-UL.
- * Insulation class for motors which acquired certificates for export is B.

REVERSIBLE MOTORS

DIMENSIONS

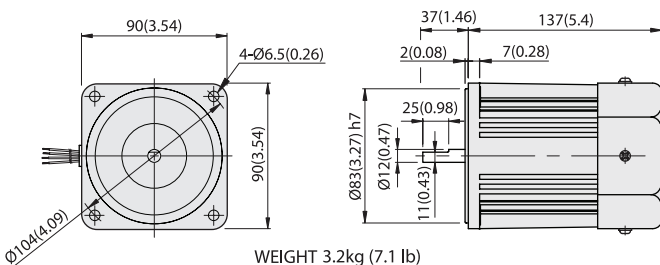
Unit : mm(inch)

L9R90P□H



WEIGHT 3.2kg (7.1 lb)

L9R90D□

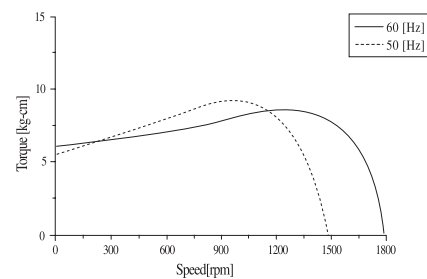


WEIGHT 3.2kg (7.1 lb)



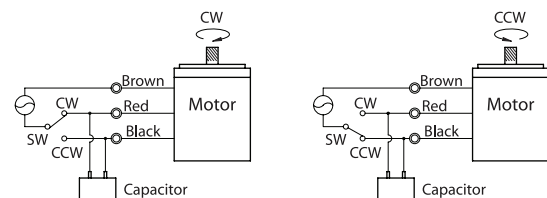
SPEED-TORQUE CURVE

Single phase L9R90□□



CONNECTION DIAGRAMS

Standard or with T.P



The direction of rotation is seen from the end of motor shaft.